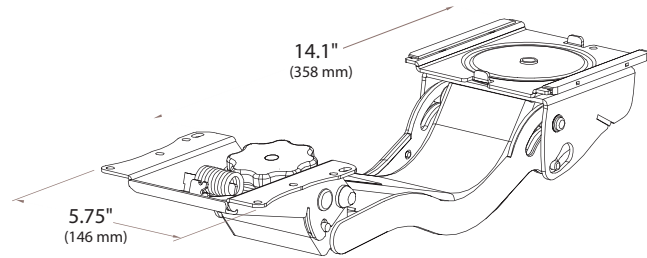


Tilt-A-Wheel Cobra™

- Convenient one-hand tilt adjustment by rotating the soft touch wheel
- The unique Cobra™ mechanisms offer a tremendous 12½" (317 mm) of travel to accommodate users of varying heights, in seated to sit to stand applications
- Provides greatest range of user mobility with a full 20° of negative tilt and 10° of positive tilt
- 360° rear swivel for optimal keyboard tray positioning
- More compact than other enhanced range arms on the market, the Cobra™ and platform will fully retract on a 23" (584 mm) track
- Slim profile allows for maximum knee clearance when in use or retracted.
- Box frame design provides maximum side-to-side keyboard tray stability for a solid, quality feel
- Available in durable black powder coat (standard), or with a choice of custom colors
- Installation hardware and instructions included
- Exceeds ANSI/BIFMA X5.5, 1998 industry performance standard
- Lifetime warranty



Tilt-A-Wheel Cobra™ SPECIFICATIONS

HEIGHT ADJUSTMENT	
UP	7" (178 mm)
DOWN	5½" (140 mm)
TOTAL	12½" (318 mm)
HEIGHT SET	LIFT AND RELEASE
+10° / -20° TILT SET BY	SOFT TOUCH WHEEL
360° SWIVEL	YES
FULLY RETRACTABLE	YES, 23" (584 mm) TRACK INCLUDED
ANSI/BIFMA X5.5 1998	YES, EXCEEDS
MATERIAL	STEEL
FINISH	BLACK, SILVER OR WHITE TEXTURED POWDERCOAT

TRACK OPTIONS



STANDARD 21" Glide TRACK provides Complete retractability

NON-STANDARD TRACK LENGTHS ARE AVAILABLE UPON REQUEST

TRACKS CAN BE CUT ON SITE WITH PROPER HAND TOOLS TO ADJUST FOR DIFFERENT MOUNTING CONDITIONS

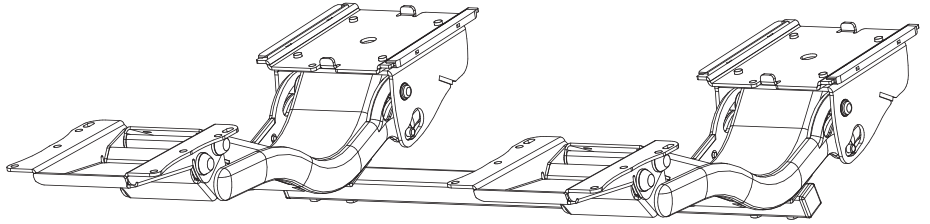
NEGATIVE-TILT ONLY

AVAILABLE WITH ALL COBRA™ TRAY SETS, THE ARTICULATING ARM COMES PRESET AT THE FACTORY TO OPERATE IN ONLY THE NEGATIVE-TILT POSITION.

TO ORDER: PLACE -NTO AFTER THE PART NUMBER ON YOUR ORDER

CobraMate™ Advantages:

- Ultimate in stability
- Height adjustment through an impressive 12½" (318 mm) travel range controlled with a "Lift and Release" design
- Retracts 8½" (215 mm) to optimize position of the workspace
- Flexible design enables product to be retrofitted to existing furniture
- Spring balanced for effortless height adjustment
- Mounts below the primary work surface
- Slim profile allows for maximum knee clearance
- Exceeds the ANSI/BIFMA X5.5 1998 industry performance standards for wide keyboard surfaces
- Lifetime warranty



CobraMate™ SPECIFICATIONS

HEIGHT ADJUSTMENT	12½" (318 mm)
WIDTHS	22" (558 mm) OR 30" (762 mm)
RETRACTS	8½" (215 mm)
ANSI/BIFMA X5.5 1998	YES, EXCEEDS FOR WIDE KEYBOARD SURFACES
MATERIAL	STEEL
FINISH	TEXTURED BLACK POWDER COAT

